

RIGLIFT UK LTD

01322-341166 | email riglift@riglift.co.uk

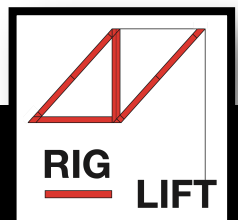
www.riglft.co.uk

ABOUT US

Riglift (UK) Ltd are a specialist machinery, plant removal and installation company which supplies skilled certificated plant movement labour, light and heavy lifting tackles, lorry loader transport, cranes, forklift and storage facilities to the Electricity, air conditioning, mechanical engineering, nuclear power and construction industries.

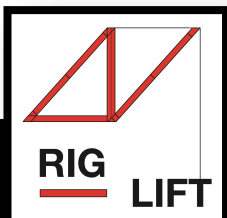
BACKGROUND

- Established 1992
- Originally specialised in Air Conditioning
- Plant/Machinery Removals/Installation Company
- Based in Erith, with various projects across the UK
- We have worked in the Electricity industry since the year 2000 with EDF Energy, & then with UK Power Networks to date

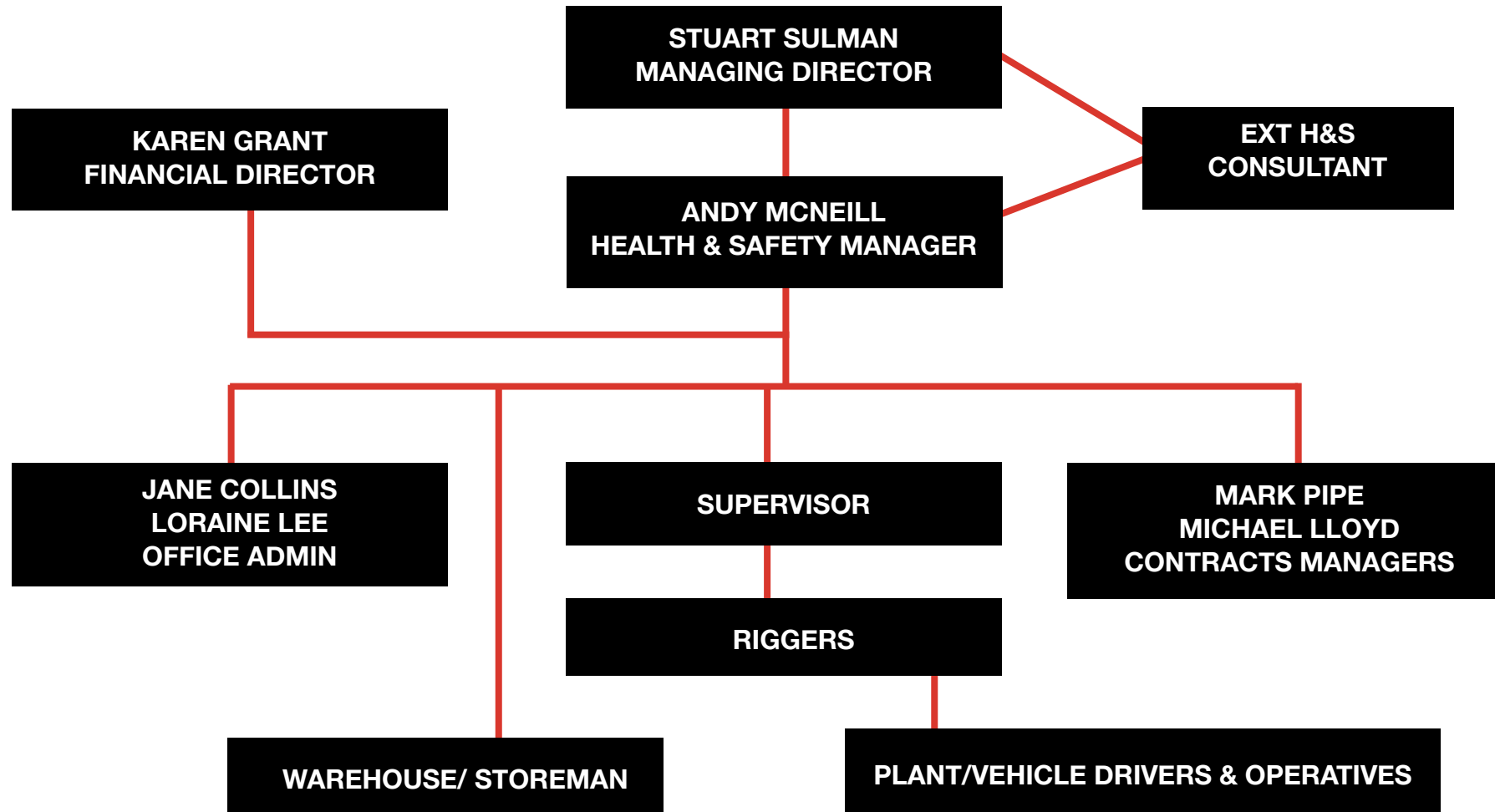


WHAT WE DO

- Full Site Survey Inspections
- Full and Detailed Quotations for the Works
- Method Statements, Lift Plans, and Site Specific Risk Assessments
- Traffic Management, Road Closures, Crane Licenses, Parking Bay Suspensions, Bus Diversion and Bus Stop Suspension
- CAD Drawings
- Project Management. CDM Compliant
- Detailed Site Toolbox Talks.
- CPCS Accredited Personnel
- Plant Machinery Installations & Removals
- Lorry Loader Cranes
- Transport
- Christchurch Crib Gantry Systems
- Mobile Cranes
- Forklift Trucks, Tele Handler's
- In situ beam testing
- Fabrication
- LOLER Testing Inspectors
- Industrial Storage Facility
 - Internal 5370 sq/ft
 - External 45000 sq/ft

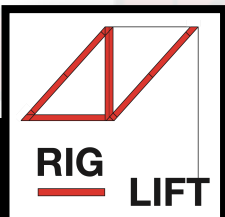


HEALTH & SAFETY ORGANISATION



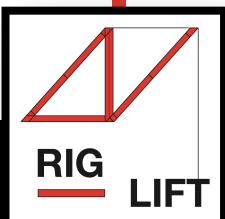
HEALTH & SAFETY

- Health & Safety Policy Statement
- Health & Safety Plan
- IOSH Trained Personnel
- SMSTS & SSSTS Accredited Personnel
- Qualified External Health & Safety Consultant
- COSHH
- CPCS & CSCS Accredited Personnel
- Method Statements, Lift Plans, Risk Assessments
- ALLMI, NPORS, IPAF, PASMA, ITSSAR Accredited Personnel
- Toolbox Talks
- Approved Sub Contractors
- CDM



INSURANCES

- Employers Liability : sum insured £10,000,000
- S Public/Product Liability : sum insured £5,000 ,000
- S Machinery Movement : sum insured £750,000
- S Own Plant and Machinery : sum insured £80,000
- S Hired in Plant : sum insured £500,000
- S RHA Conditions Road Haulage Association
- S CPA Construction Plant Association Insurance
- S All Risks Insurance –upon request
- S Motor Insurance

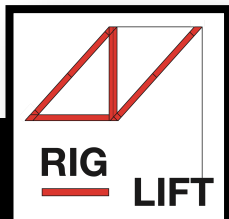


FLEET

- 8 Wheeled Rigid Hiab Vehicles plated at 32T
- 7.5T Rigid Hiab Vehicles
- 12T Rigid Hiab Vehicles
- Other smaller vehicles up to 7.5T
- Fully Equipped Tackle Vans
- Mobile Cranage up to 1000T

TRANSPORT OPERATIONS

Whenever your equipment is transported to and from sites, it is fully insured under RHA terms and conditions, all our vehicles are fully tracked from the point of collection to the point of destination, whilst doing this it enables us to utilize our fleet efficiently.



LIFTING OPERATIONS

- Method Statements
- Lift Plans
- Risk Assessments
- Appointed Persons
- Crane Supervisors
- Slinger Signallers
- Banksman
- Skilled Riggers
- Certificated Operatives

Lifting
Operations and
Lifting
Equipment
Regulations 1998

Provision and
Use of
Work
Equipment
Regulations 1998



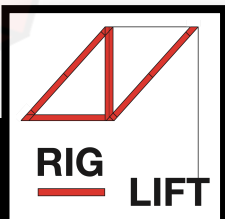
OUR SERVICES TO OUR CUSTOMERS

- 100 % Commitment
- On Time, Every Time and Within Budget
- Reliability and Available 24/7
- Experienced Labour Force
- Safety First and Foremost
- Our Service to our Customers are of a High Standard
- We operate an immediate response ability with a direct working arrangement with all of our Customers.

BUSINESS DEVELOPMENT

All supervisors, drivers and warehouse operatives have a fully interactive and web based linked Samsung galaxy tab active 2 tablet, capable of drivers walk round checks, web based LOLER certification, DocuSign, Method Statements and Work Record Sheets, access to sending and receiving emails.

- New and more efficient vehicles have been purchased.
- Replacement of main lorry loaders with new emission compliant
- Vehicles to Euro 6 Standard.



GET IN TOUCH



RIGLIFT UK LTD

RICHMER ROAD

ERITH

KENT

DA8 2HN

01322-341166

riglift@riglift.co.uk

www.riglift.co.uk

